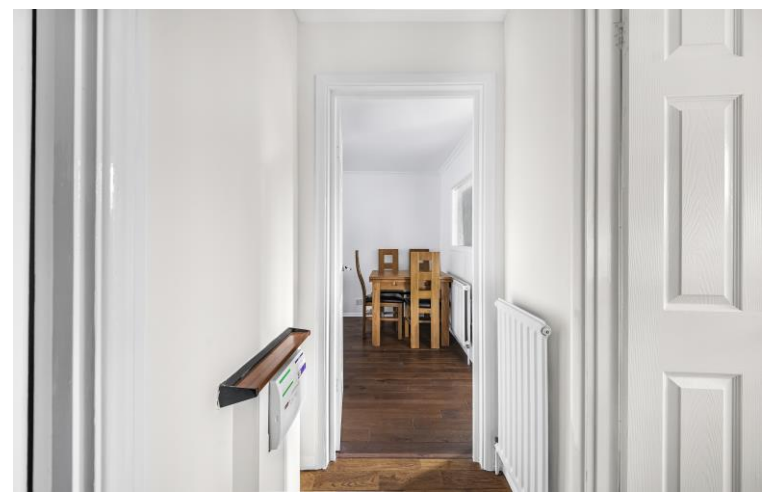




Hedge Lane, Palmers Green, N13

£285,000



Mintern Close , Palmers Green N13

New to the market, Nicholas James, is proud to present this refurbished 2nd floor purpose built apartment positioned within a short walk of the highly regarded Hazelwood Primary and Winchmore Hill Secondary schools.

Located off Hedge Lane overlooking Hazelwood recreational ground and a short walk to local amenities on Green Lanes.

The property comprises a double bedroom, lounge, separate kitchen, family bathroom all recently refurbished to a very good standard.

Communal gardens & off street parking are an added bonus for the desirable property. Access to the City and West End are provided by Palmers Green Overground station situated just 0.9 miles with a variety of nearby bus routes on Green Lanes. The property benefits from a share of freehold (company) and is offered chain free.

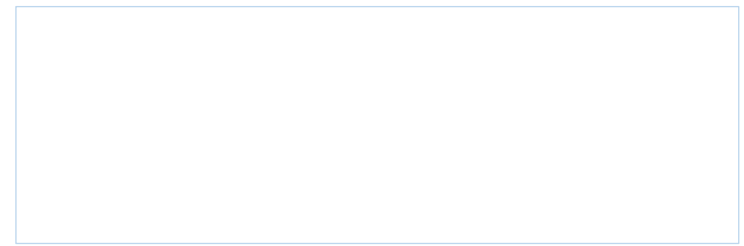
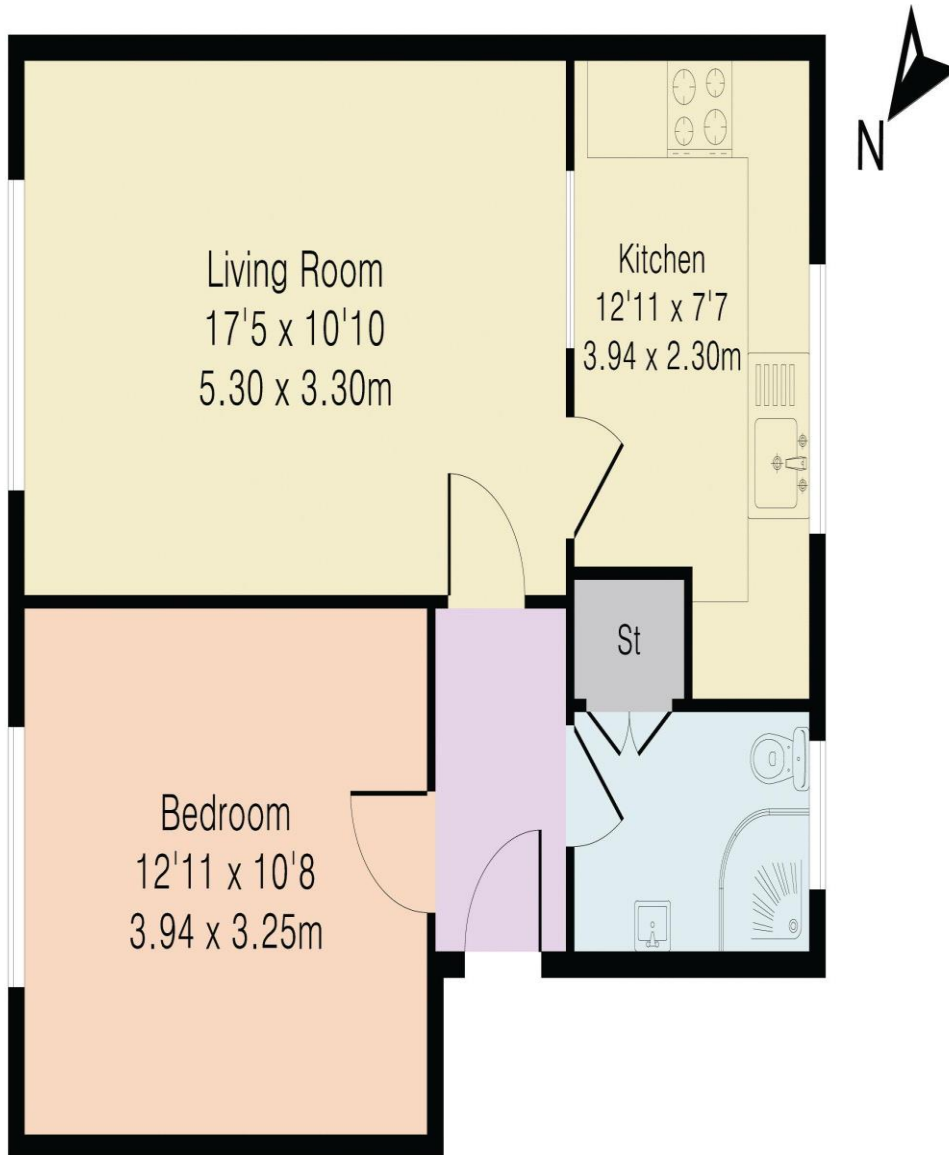
This is a great opportunity for residential buyers or investors alike. Viewings are highly recommended.

- Share of the freehold company - Lease 999 years from 29th September 2000. circa 975 years remaining. -

Service charge -Circa £700 Per year - Building Insurance £251 per year



Approximate Gross Internal Area 503 sq ft – 47 sq m



Nicholas James

"Honesty is the only investment that never fails"

Tel: 020 8886 9462
34 High Street Southgate London Greater London N14 6EE
info@njestates.co.uk
www.njestates.co.uk

All details including floorplans are for representation purposes only and do not constitute a contract or a warranty. Whilst every effort has been made to ensure accuracy of descriptions and measurements, no responsibility is taken for errors, omissions and misstatements.