



Mahon Close, Enfield, EN1

£299,950



Mahon Close, Enfield, EN1

Nicholas James is excited to offer this lovely one-bedroom end of terraced house, with own front garden, on Mahon Close EN1.

The accommodation consists of a substantial reception room, good sized kitchen, bathroom, good size double bedroom with ample storage space.

Externally the property has its own private garden and allocated parking space.

The property is offered on a chain free basis and is sure to be of interest to first time buyers and investors alike.

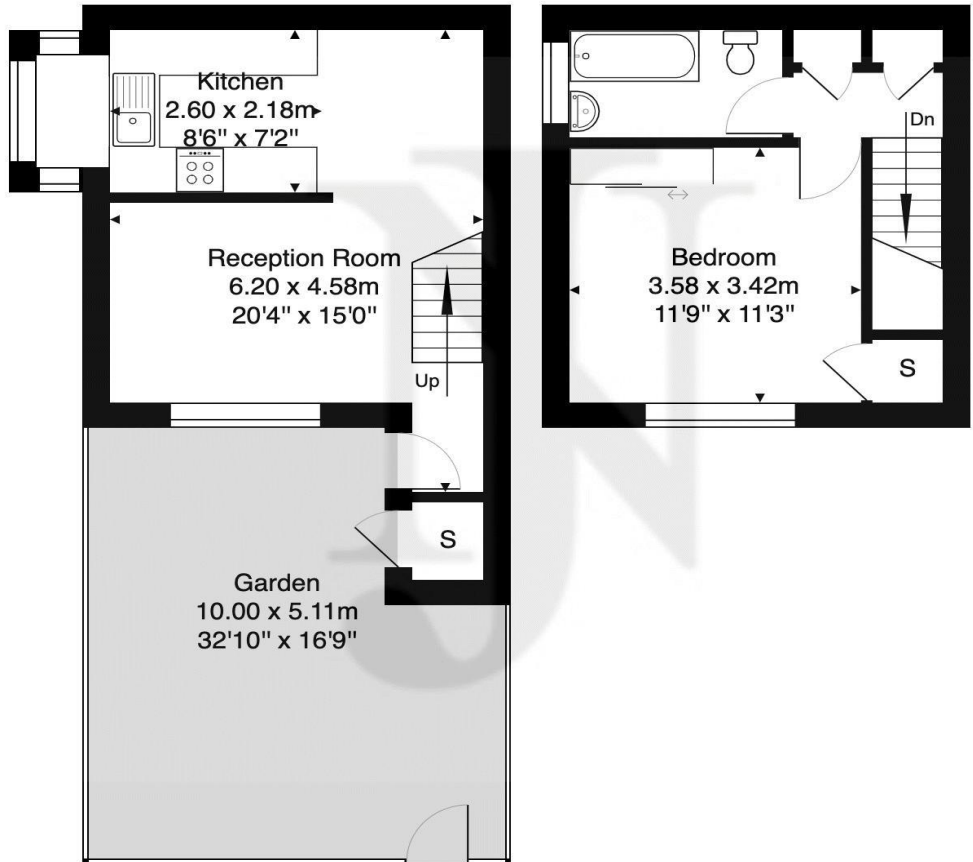
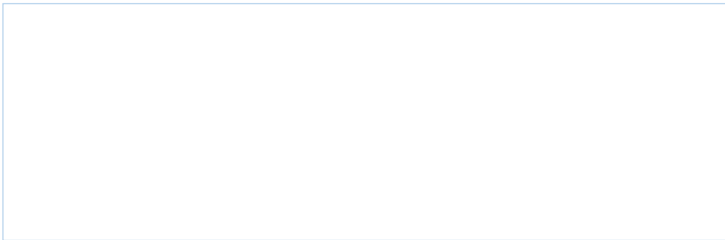
The location has great road links with easy access to M25 and A10. Enfield Town is just under a mile away with Enfield Town London overground and Gordon Hill B.R giving access to Liverpool Street and Moorgate respectively.

Forty Hall Country house and Estate is nearby. There is a wonderful range of walking routes close by. Viewings are highly recommended.



Mahon Close- EN1

Approximate Gross Internal Area 49.3 m² ... 531 ft²



GROUND FLOOR

FIRST FLOOR

This Plan is for illustration purpose only and used as general indication of the proposed layout of the property. Dimensions are maximum and approximate and may vary.

Copyright One Square Space Ltd



Nicholas James

"Honesty is the only investment that never fails"

Tel: 020 8886 9462
34 High Street Southgate London Greater London N14 6EE
info@njestates.co.uk
www.njestates.co.uk

All details including floorplans are for representation purposes only and do not constitute a contract or a warranty. Whilst every effort has been made to ensure accuracy of descriptions and measurements, no responsibility is taken for errors, omissions and misstatements.

