



For Sale

Whitehouse Way, Southgate N14  
Asking price £645,000

This 3 bedroom semi-detached house located in the sought after location of Southgate. This wonderful property boasts a large through lounge, gas central heating, 3 piece fully tiled bath suite, large separate kitchen, off-street parking, rear garden with patio and basement Off -street parking.

The property is within a short walk to The Green's shopping amenities and within a 10 minute walk to Arnos Grove tube station (Piccadilly Line) or Southgate Station. The property is also located within a 10 minute walk to Walker Primary school and Ashmole secondary school.

**MUST BE SEEN!**

PROPERTY MISDESCRIPTION ACT 1991

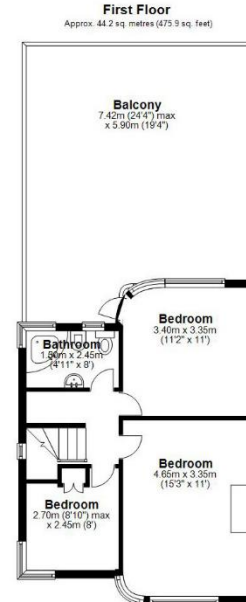
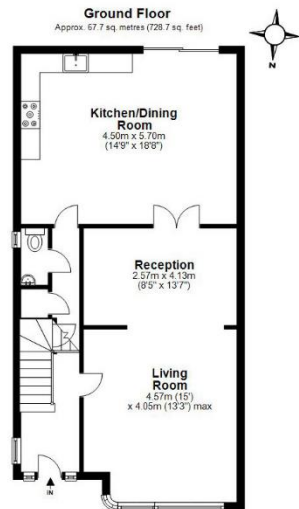
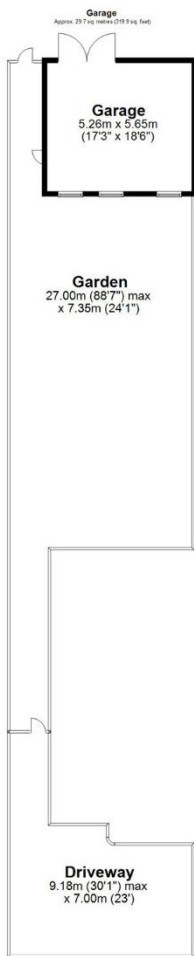
Nicholas James make every effort to ensure the accuracy of these details, it should be noted that the above measurements are approximate. Nicholas James has not tested any equipment, fixtures, fittings or services and so cannot confirm that they are in working order. We have not had a sight of the title documents and any reference to the tenure of a property based on the information supplied by the seller. Nicholas James are unable to confirm that the relevant planning permission and or building regulation approval has been obtained where any structural alterations have occurred. Photographs are provided for illustration only and do not depict what is included in the sale.

Nicholas James 34 High Street Southgate N14 6EE Residential Sales – Lettings & Management Agents  
tel: 020 8886 9462 Web: [www.njestates.co.uk](http://www.njestates.co.uk) Email: [info@njestates.co.uk](mailto:info@njestates.co.uk)



PROPERTY MISDESCRIPTION ACT 1991

Nicholas James make every effort to ensure the accuracy of these details, it should be noted that the above measurements are approximate. Nicholas James has not tested any equipment, fixtures, fittings or services and so cannot confirm that they are in working order. We have not had a sight of the title documents and any reference to the tenure of a property based on the information supplied by the seller. Nicholas James are unable to confirm that the relevant planning permission and or building regulation approval has been obtained where any structural alterations have occurred. Photographs are provided for illustration only and do not depict what is included in the sale.



Total area: approx. 141.6 sq. metres (1524.5 sq. feet)

For Illustration Purposes Only - Not To Scale  
www.jpapix.com

**PROPERTY MISDESCRIPTION ACT 1991**

Nicholas James make every effort to ensure the accuracy of these details, it should be noted that the above measurements are approximate. Nicholas James has not tested any equipment, fixtures, fittings or services and so cannot confirm that they are in working order. We have not had a sight of the title documents and any reference to the tenure of a property based on the information supplied by the seller. Nicholas James are unable to confirm that the relevant planning permission and or building regulation approval has been obtained where any structural alterations have occurred. Photographs are provided for illustration only and do not depict what is included in the sale.